

Crystal Palace Iguanodon Archive

By Jamie Geddes



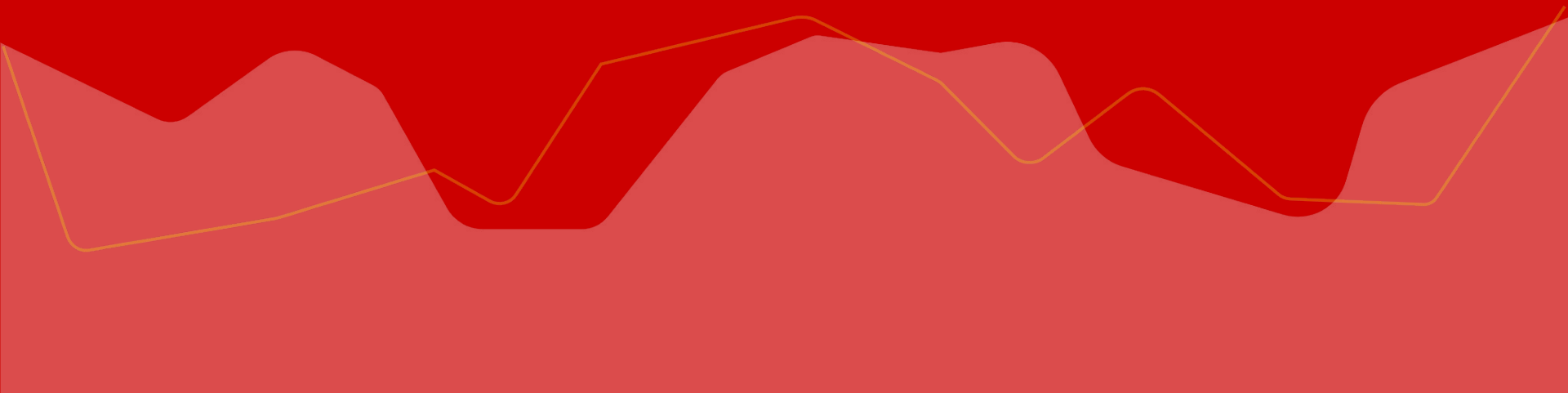
**Why highlight this
collection?**



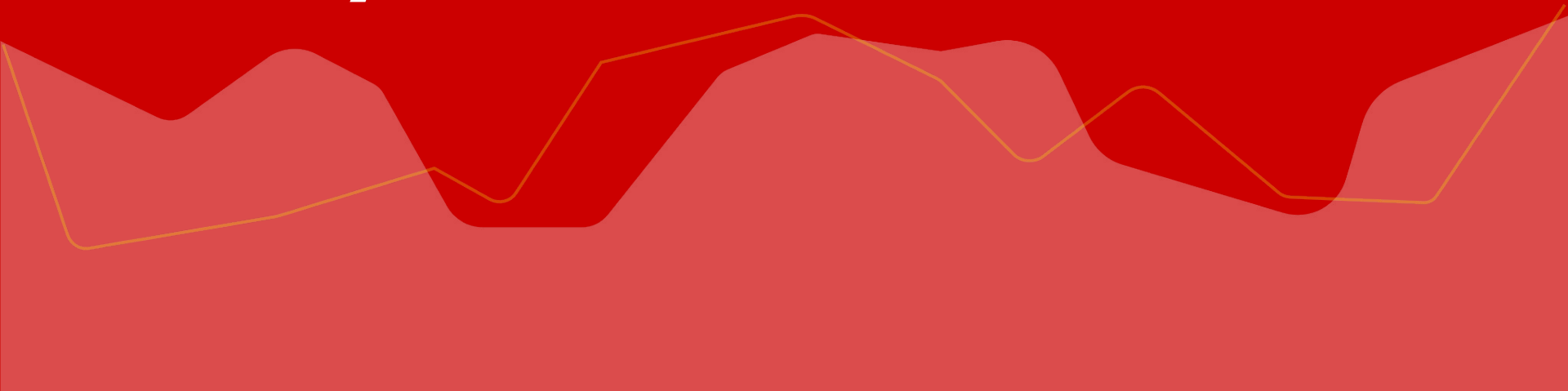
Is it Because...



Its Dinosaurs



Well yes and no





Archaeology
Data Service

Overview of What are The Crystal Palace Dinosaurs?

- Thirty-two concrete sculptures
- world's first full scale, three dimensional constructions of dinosaurs
- Built between 1850–1854, Benjamin Waterhouse Hawkins
- Commissioned to accompany the Crystal Palace after its move

Why does the ADS have a collection on these dinosaurs?

To preserve the survey recording data for the structural condition of dinosaurs – Specifically the development of cracks in the Standing Iguanodon, arguably the most iconic of the Crystal Palace Dinosaurs

Photogrammetry and 3D models – Images used to create the 3D models deposited, Models of the whole Iguanodon, the Iguanodon leg 2016 and the Iguanodon leg 2017

Spreadsheets– Containing the crack data from 2016 and 2017

Reports– Report and thesis by India Carpenter





Plate 29 – Full scale digital model with texture – front diagonal view²⁹

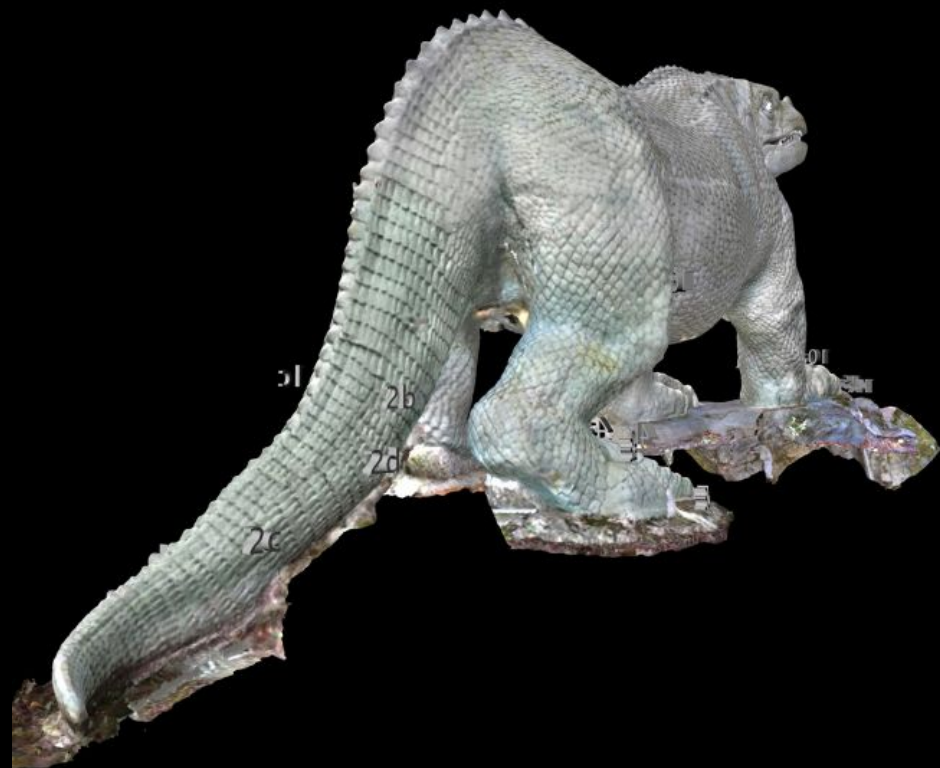


Plate 31 – Full scale digital model with texture – back right diagonal view³¹

India Carpenter,
Stephen Gray (2017)
Crystal Palace
Iguanodon condition
survey [data-set].
York: Archaeology
Data Service
[distributor]
<https://doi.org/10.5284/1045778>

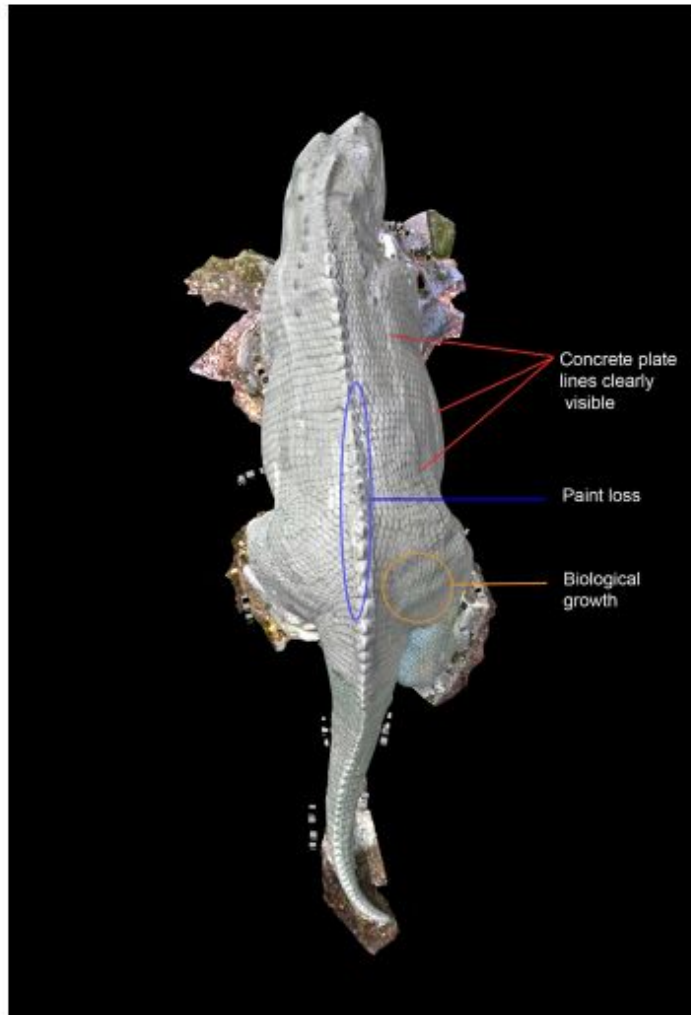


Plate 36 – Digital model viewed from the top – condition issues and structural details revealed³⁵.

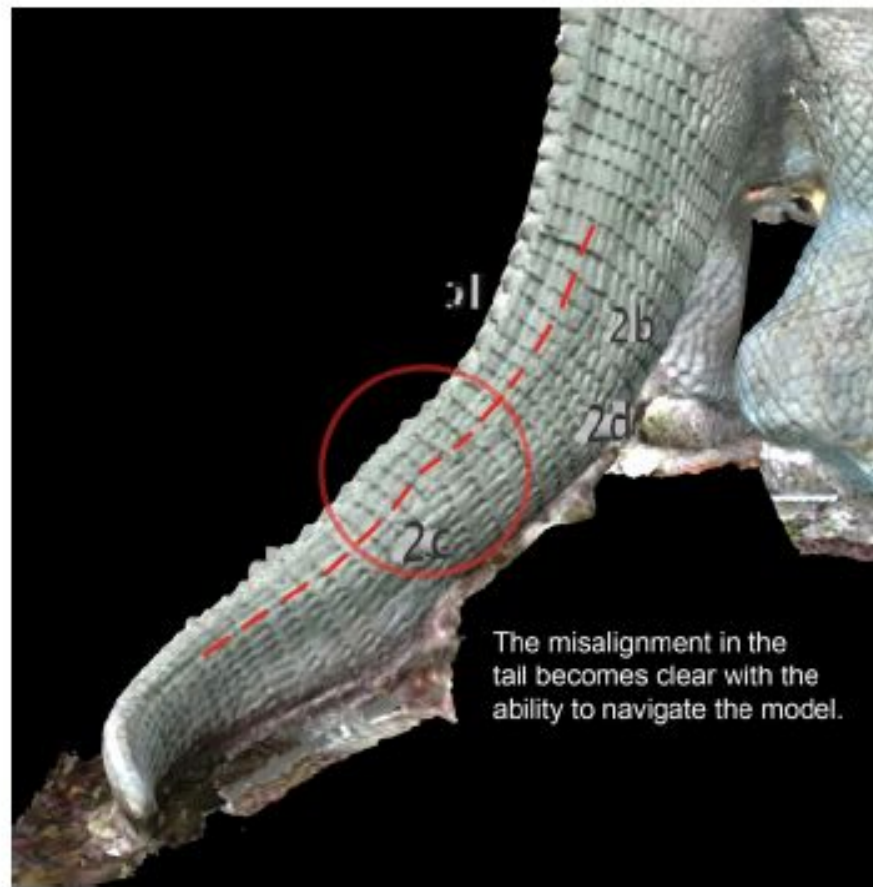


Plate 37 – Distortion of the tail revealed with the ability to navigate the tail and observe from numerous angles³⁶.

**But yeah also because
its dinosaurs**



**Thank You For
Listening**

The bottom of the slide features a decorative graphic. It consists of a light red background with a white line graph that fluctuates across the width. Above the white line, there is a darker red area that also fluctuates, creating a layered, abstract effect.



Archaeology
Data Service

Thank you



Archaeology Data Service

Department of Archaeology

University of York

The King's Manor

Exhibition Square

York, YO1 7EP



www.archaeologydataservice.ac.uk



help@archaeologydataservice.ac.uk